

GPH-01 2 Way Adjustable Pivot Hinge

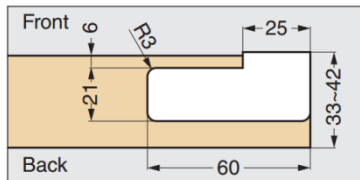
Features

- Hinge position adjustable without removing door
- Sold in pairs (for top and bottom)

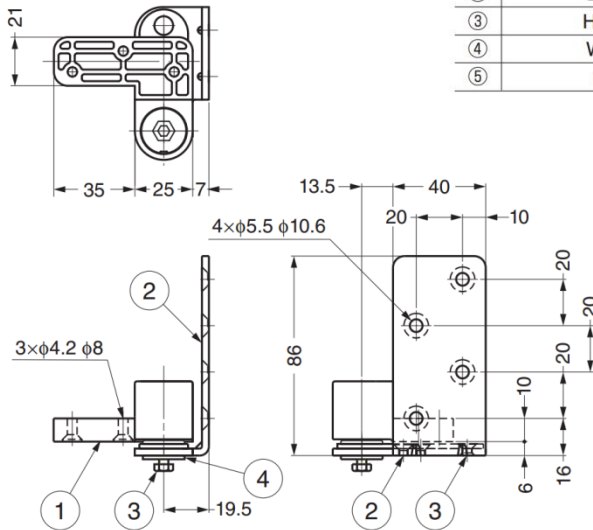
Parts Included

- Countersunk head tapping screw 4×30

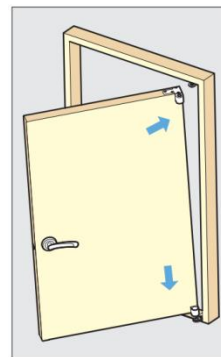
Cut Out Dimensions



No.	Part Name	Material	Finish/Colour
①	Body	Zinc Alloy (ZDC)	Matte Silver
②	Bracket	Stainless Steel (SUS304)	Polished
③	Hex Bolt	Stainless Steel (SUS304)	—
④	Washer	Stainless Steel (SUS304)	—
⑤	Cover	ABS	White

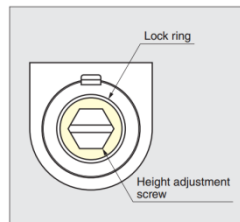
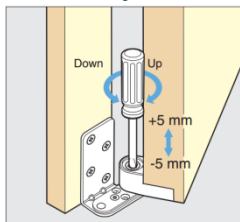


Door Installation



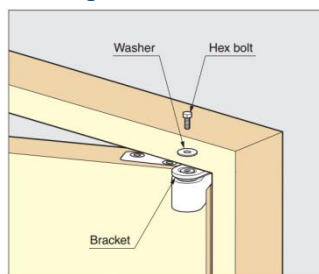
1. Insert bottom hinge to the bracket.
2. Install door while pushing the shaft of upper hinge.
3. Secure to check the door is fixed with the frame.

Vertical Adjustment



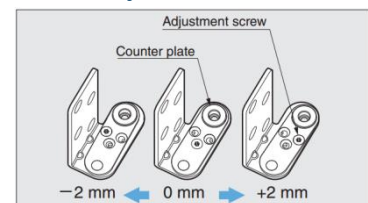
1. Remove the cover cap.
2. Loosen hex lock ring.
3. Adjust by turning slotted screw.
4. Tighten hex lock ring.
5. Put the cover cap.

Locking Mechanism



Hex bolt holds the door and prevents the door falling off unexpectedly.

Lateral Adjustment



Part No.	Door Width	Door Height	Door Thickness	Door Weight
GPH-01	Max. 850	Max. 2300	33 ~ 42	Max. 35 kg / pair